

V/M VERTEX METAL CRAFTS
Crafting the Accuracy you DESERVE



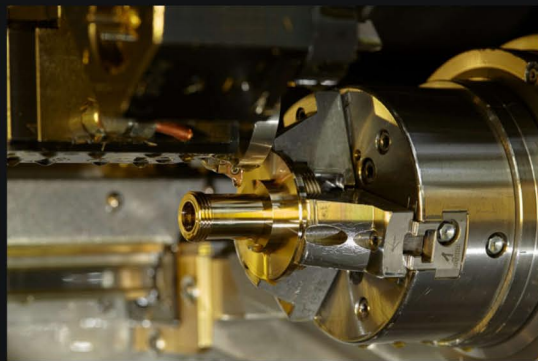
Manufacturers & Exporters of
Precision Turned &
Milled Components

About Us

01. Company Introduction

Established since 3 DECADES, we are leading manufacturer and exporter of Precision Turned & Milled Metal Components. We are a client-centric organization that is focused towards meeting the clients' requirements and demands in the best possible manner. In order to match up to the expectations of our clients, we manufacture our products using optimum quality materials.

Our wide range of offerings includes Brass Electrical Parts, Brass Fittings, Brass Fasteners, Stainless Steel Components, Aluminium Components, etc.



02. Business philosophy & Our Values

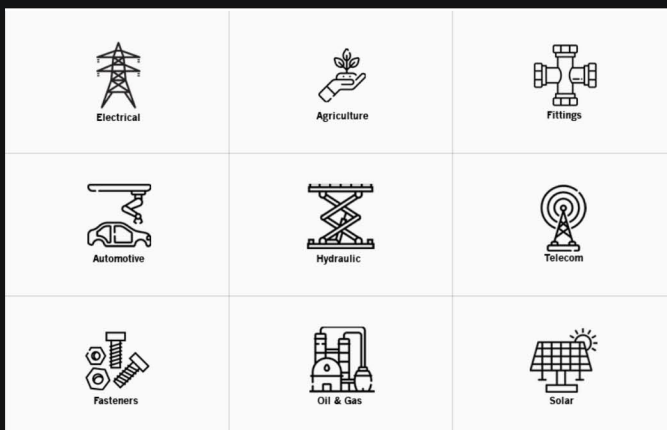
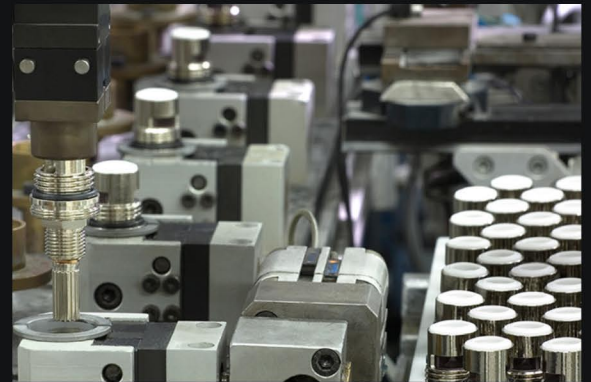
Our business philosophy is serving our valuable customers with the world class solutions for their requirements, not only sell the products and to develop & evaluate the sources for the cost effective solution for the specific product requirements with keeping quality standard matches with the high benchmarks.

We believe in treating our customers with respect and faith. We grow through creativity, invention and innovation. We integrate honesty, integrity and business ethics into all aspects of our business functioning.

03. Skilled & Dedicated Team

We are a team of highly skilled and experienced professionals who endeavor their best to achieve the goals of our company successfully. Our each and every professional is trained in his respective field so that he can perform the task in absolute perfection.

Our team is a powerhouse of diverse expertise, driven by a shared commitment to excellence. Each team member contributes a unique perspective, making our collective efforts resilient and adaptable in achieving our goal.



Industries We Serve

We serves a wide range of industries, we have adapted our services to suit a range of different industries. Some of the industries that we serve are mentioned here.

Quality

Superior quality is the primary concern at Vertex Metalcraft. We strictly adhere to stringent quality management systems in order to facilitate an error free production from every stage. Our entire manufacturing process is monitored by a team of well professionals having years of experience behind them. A team of trained supervisors and quality control inspectors ensures that the quality is maintained at all the stages of production.

Our target is to provide zero defect products to our customer, which is remarkable and we firmly believe into it. To meet the global demand we take care at every stage right from raw material purchase to finished goods. We always starve to provide our customers with best quality products with zero compromise and 100% satisfaction.



ISO Certified Company

Our plant is ISO 9001:2015 certified, a certification for quality management system which is being issued by the International Organization.

Quality Control



Excellence In Every Detail. Precision Meets Perfection

Our quality control department ensures that each product is manufacturing with controlled process according to given task and quality of parts are maintained throughout entire process. For ensuring products are free from all kind of faults, we test our products with rigorous controls along with supplementary test like process control, assembly line control, quality control, material control, dimensional control, leakage and pressure control. We can also provide inspection and testing reports to our clients if they require. Because of our ethical business policies, we are able to serve our all esteemed clients which are located across the globe.

Quality Inspection Equipments & Gauges

Instruments are heartbeats of industry, to assure good quality, instruments are required. Company has invested a good amount to have majority of inspection instruments and gauges along with the profile projector and other sensitive instruments.



Hardness Testing Machine



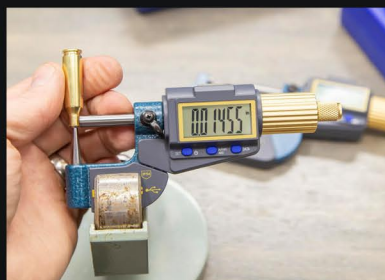
Profile Projector



Spectro Meter



Vernier / Caliper



Micro Meter



Gauges

Brass Electrical Components



Description

We are manufacturing all Kinds of Brass Electrical Components, Brass Electrical Parts and Brass Electrical Fittings like Electrical Plug Pins, Sockets Pins, Brass Neutral Links, Brass Terminal Block, Brass Connectors, Brass Contacts and more. Brass Electrical Components are consumed in various applications like Toggle Switches, Modular Switches, Switchgears, Fuse Switches, Plug Pins & Sockets and many Electrical & Electronics Equipment or Parts. Brass Electrical Components for various industries including Power Generation, Electronic Industry, Solar Energy, Automotive Industry, Medical Industry, Electrical and Engineering Assembly.

Brass Turned & Milled Components



Description

We are engaged in offering a wide range of Brass Turned & Milled Components to our clients at a reasonable cost. Our turned and milled components are made using quality raw material such as high and fine grade brass to assure quality and reliability. We manufacture all types of Brass turned and milled components depending upon client's requirement for application in any industry. The range of Brass Turned And Milled Components find wide application in machine building, automobile, hydraulics and general engineering industry.



Brass Fittings



Description

Brass is widely used in manufacturing brass fittings, plumbing fittings, flare fittings, garden hose fittings, compression fittings, transmission fittings, pipe fittings & threaded fastening, due to its excellent qualities as rust-resistance, hardness, wear-resistance, high tensile strength, durability and flexibility. The main key feature of brass Fittings is its excellent corrosive resistance, and also its plating, joining, polishing and finishing characteristics. Each brass fitting design use for specific application and purpose. Depends on the operation, specific Brass Fittings are used to join or connect two components or parts in industrial applications.

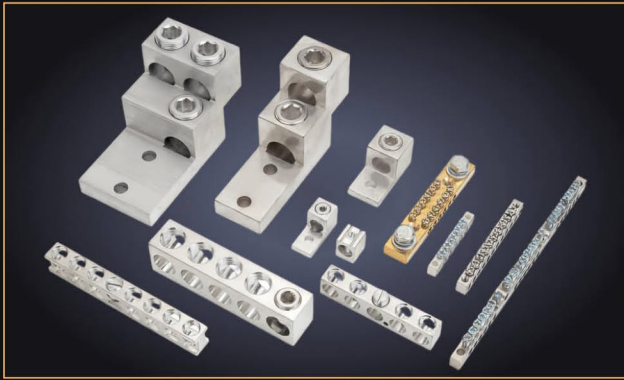
Stainless Steel Components



Description

We Manufacture Stainless Steel Turned Components, Stainless Steel Machine Components, Customized Stainless Steel Components, etc. Our products are known in the market for their superior varieties and durability. These are widely appreciated for their sustainability, reliability, and precise designs. We ensure the most reliable products which are available in the best specification at the most profitable price range. Our products use in many industries like Automotive, Material handling, Textile industry, Medical, and Engineering sectors.

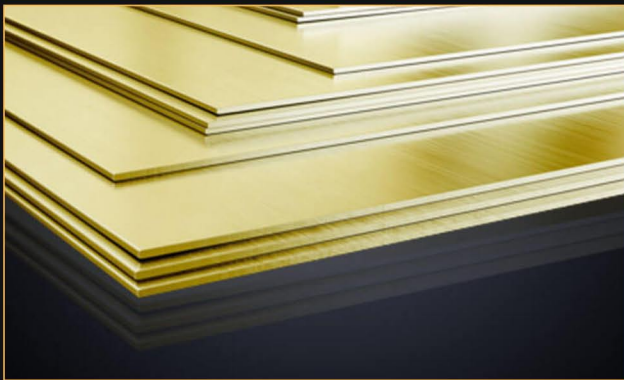
Aluminium Components



Description

Aluminium Components are used in the automobile, electrical, electronics, mechanical, telecom and plastic industries. Before the last dispatch, a pool of quality machinery strictly inspects these products against diverse parameters of quality. Owing to their high corrosion resistance and optimum finish, Aluminium Components are widely demanded in the market. As all our products are developed using technologies best suited to the latest industrial applications and consumer demands, they are known for exhibiting rich attributes. Aluminium Components are known for rugged construction, assuring proper fitting, durability, outstanding performance and low maintenance. These Aluminium Components are available in different sizes and configurations in the market as per customer requirements and specifications.

Brass Extrusion Products



Description

We are leading manufacturer of Extrusion products in Non Ferrous Metals. Our never-ending list of products includes Brass Rods, Brass Hollow Rods, Brass Billets, Brass Ingots, Brass Section, Brass Profile, Brass Wires and many more. Our extrusion rods size ranges form 4mm diameter to 100mm as per required material grade. All our products are compulsorily passed through spectrometer testing for alloy composition testing and hence we guarantee the material grade composition. Apart from the good machinability, corrosion resistance and higher strength properties, brass rods have other added benefits over stainless steel and aluminum.

Brass Automotive Components



Description

We are specialized in manufacturing and customizing any kind of automobile parts as per customer requirements and CAD drawings. We are using excellent quality raw materials and advanced technology to ensure the high durability and anti-corrosive property of automobile parts. All our automobile parts are compliance with the international standards and industry norms. Our offered range of automobile parts are widely appreciated by customer in domestic as well as international market for its accurate dimension, precious design, high performance and flawless finish. Automobile Parts are widely used in all kind of vehicles and automobiles as replacement and repairing parts.



Sheet Metal Components



Description

Sheet Metal / Stamping Parts are used in varieties of applications like riveting, Fitting, Supports, Locking, Fastening & for various uses in electromechanical & Automobile Industries. It comprises a lot of types like Washers, Lugs, Tags, Gaskets, Links, Banana Plugs, Terminals, Tapping Clips, Hinges etc. Apart from Plain Washers, all other varieties are exclusively developed as per custom designs & demands. Sheet Metal Components are generally made from Brass, Copper & Steel which are the universally used in most of the applications. Flat Washer, Star Washer, Teeth Washer, Spring Washer & Split Washers can be made available as per specific requirement.

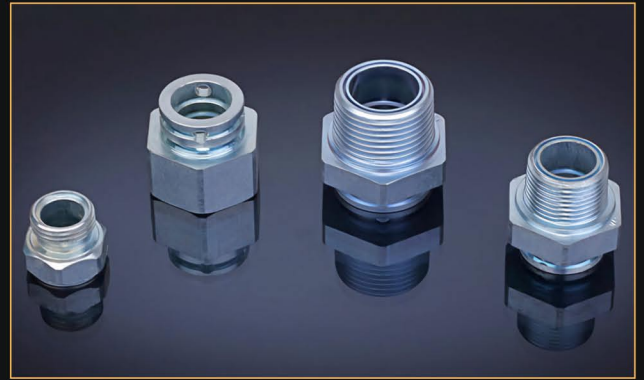
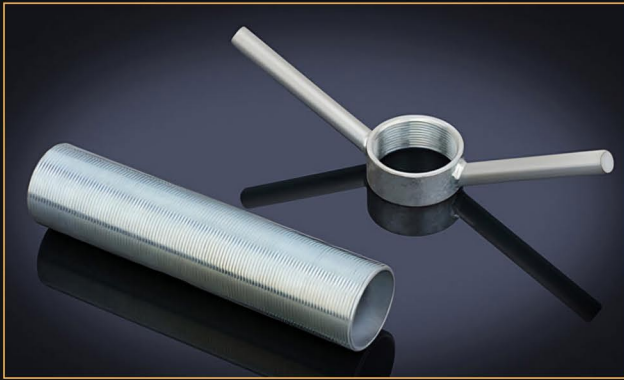
Lead Free Brass Fittings



Description

We are leading manufacturer of lead free brass fittings. Products include lead free pipe fittings, lead free, flare fittings, lead free compression fittings, lead free hose barb fittings, lead free garden hose fittings, etc. These lead free fittings are available in various sizes. Capabilities include tapering, cutting, reaming, chamfering, grooving, machining and bending. These lead free fittings are suitable for commercial and industrial plumbing, petro-chemical, OEM, power generation, pharmaceutical, aerospace, computer, marine and waterworks applications.

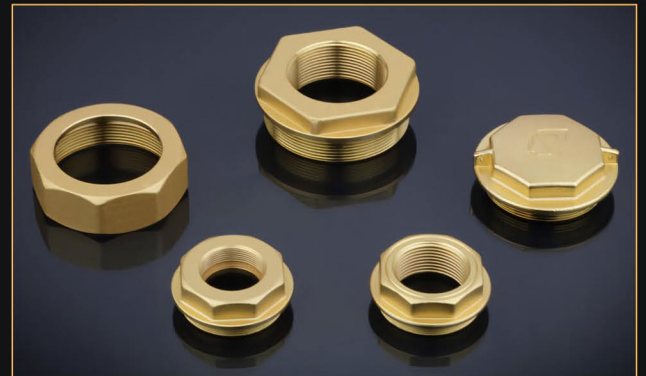
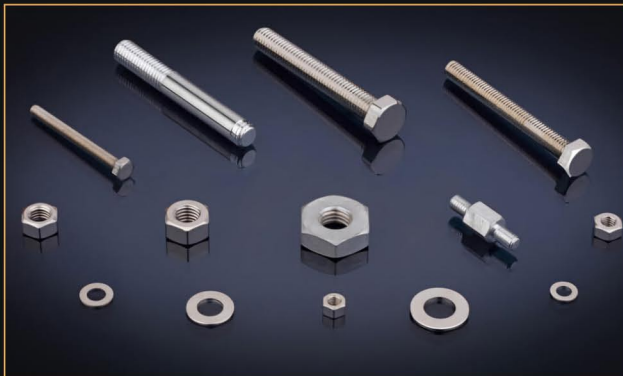
Mild Steel Components



Description

We are specialized in manufacturing of Mild Steel Turned Components in designs. We have strong command in the machining of this material as well as its variant grade like the En series. While machining we keep our specified tolerance to achieve the final size easily. We work for high precision and accuracy. We are supplying these parts to Electromechanical Industries, Fasteners, Automobile Industries, Electronic, and Electrical fittings.

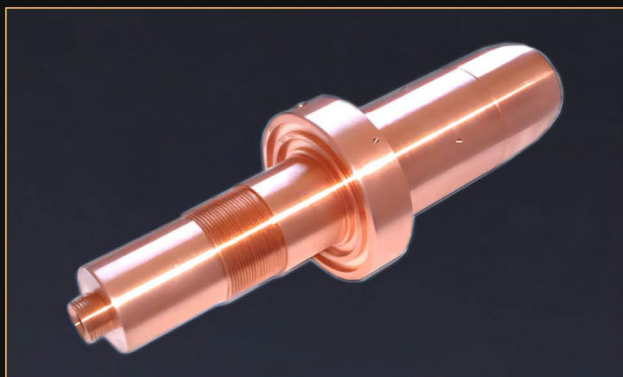
Brass Fasteners



Description

We provide high quality Fasteners with variety of types. Generally, Fasteners are hardware components that mechanically joins two or more elements together. Fasteners are easily removable without any damage to the joining components. They are made from brass, mild steel, stainless steel and other material composition.

Copper & Bronze Components



Description

Vertex Metalcrafts manufacture and export a wide range of Copper & Bronze Components including Copper & Bronze Machined Components, Copper & Bronze Turned Components, Copper & Bronze Forged Components, Copper & Bronze Casting Components, Copper & Bronze Stamping Components, Copper & Bronze Fasteners and more. Copper Can be machined, stamped, forged, cold-headed for manufacturing any type of components. Copper & Bronze Components are widely used in electrical wiring, electronics, automotive, and automobile applications.



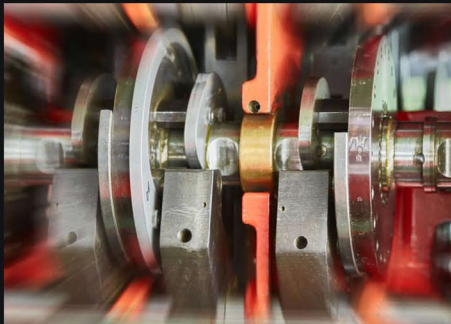
Infrastructure

Modern & Innovative Manufacturing Unit

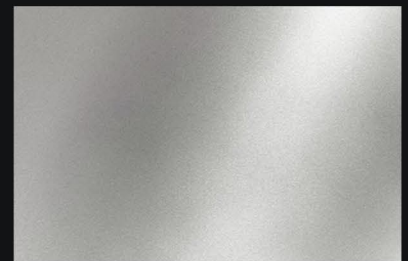
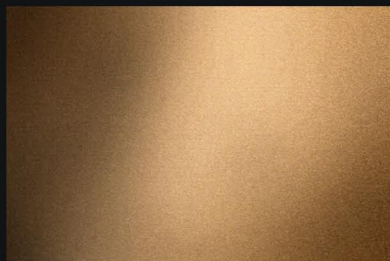
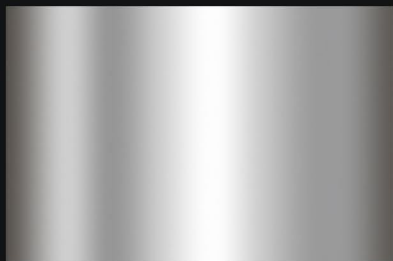
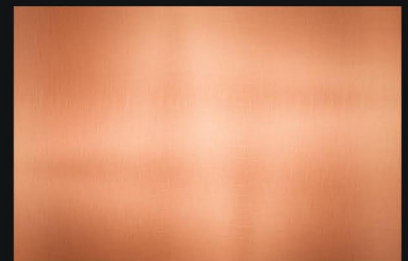
Our manufacturing unit is equipped with latest machines and technology to produce zero-defect and high performance Metal Components. The sophisticated production facilities enable us to execute orders of various sizes and specifications. The infrastructural facilities are also equipped with sophisticated packaging equipment and machinery to ensure quality packaging that ensures safety of products during transit and delivery.

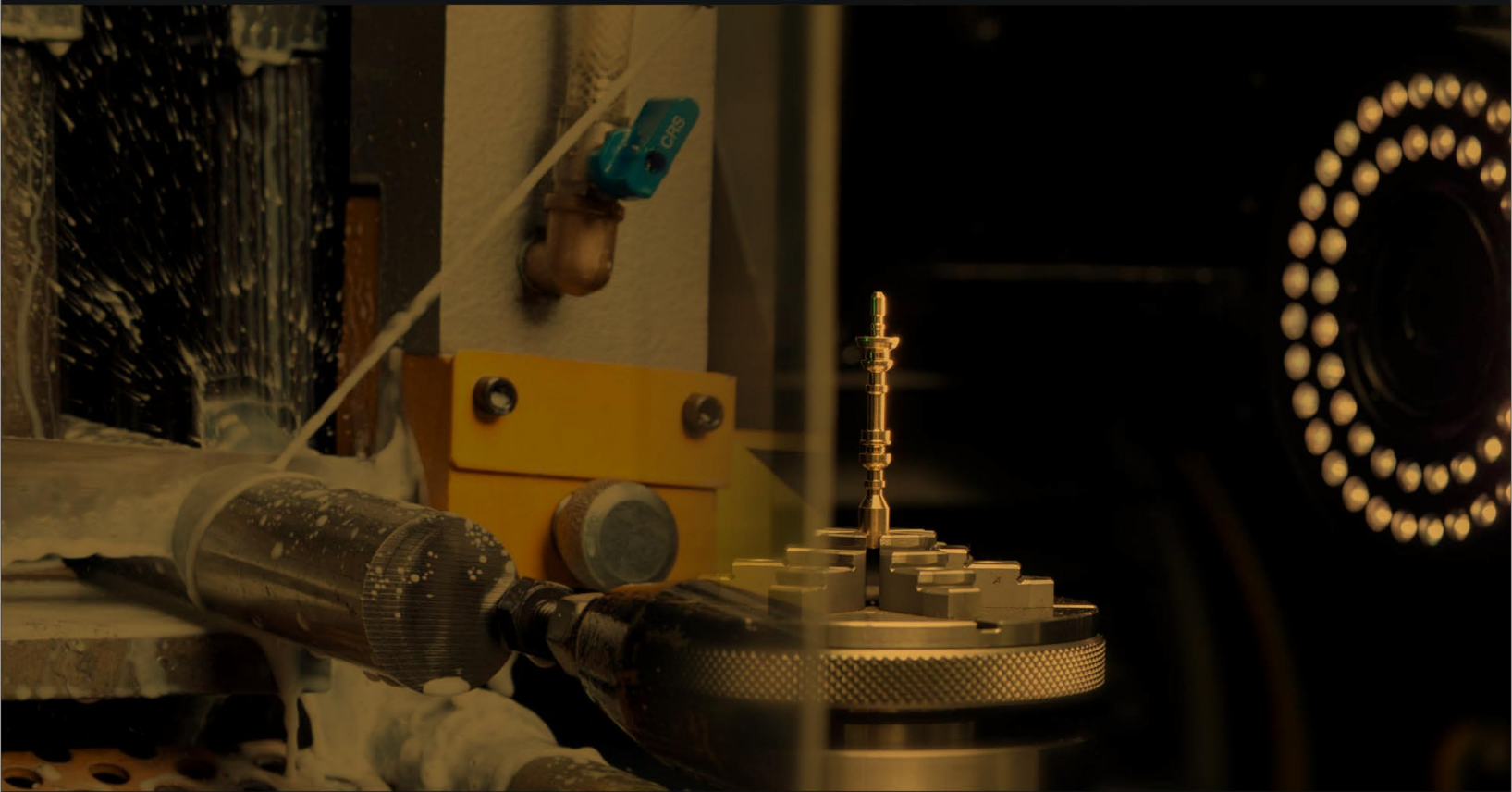
We also have a separate R & D unit for continuous research and development to come out regularly with new products and improve the quality of existing products. Refining and revising of processes is a major strength of our research team. To ensure we are able to produce product as per the market requirements we keep upgrading our machines and incorporate newer ones as and when required.

- | | |
|------------------------|-------------------------------|
| 1. Capacious Warehouse | 1. Quality Control Department |
| 2. Skilled Engineers | 2. Innovative Technology |
| 3. Modern Machineries | 3. Sophisticated Packing Unit |



We Are Capable of Machining Wide Range Of Materials





V / **M** **VERTEX METALCRAFTS**
*Crafting the Accuracy you **DESERVE***

📍 Plot No. 356, Division - 1, GIDC Phase 2,
Jamnagar - 361 004, Gujarat - INDIA

✉ info@vertexmetalcrafts.com

📞 +91 91443 23232



🌐 www.vertexmetalcrafts.com